

Wet Scrubber Case Study 1

Client:

Glass Manufacturer

Use:

Borosilicate Glass melting furnace

Exhaust gas collection

Situation before installation

*In the bag filter, heated and vaporizing borosilicate passed through the filter, crystallizing and depositing inside the duct.

*Filter clogging occurred due to borosilicate crystallizing in the filter.

*The factory was covered in dust due to loss of air volume and suction in the bag filter because of clogging.

Solution

Collect the crystallized dust while cooling the gas in the scrubber.

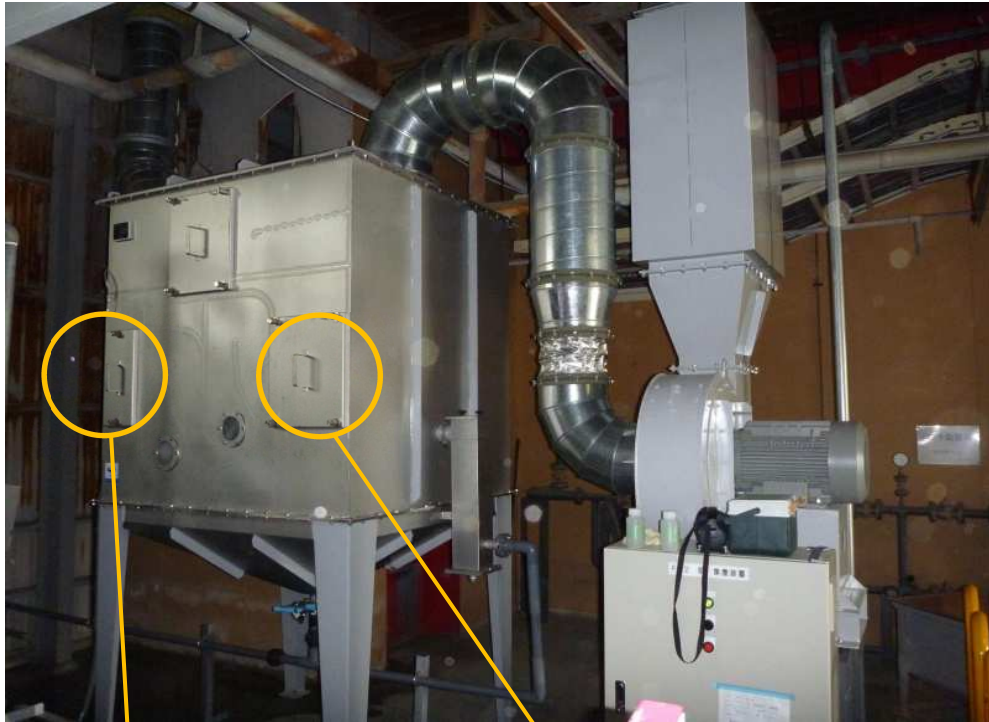
Apparatus

Model Name: Double Wet Scrubber

Model Type: DWS-120-H

Air Volume: 120 m³/min(at70°C)

Pressure loss: 2.5kPa



Inside shot two weeks later

Gas inlet side



Gas outlet side



Result

After installing a double wet scrubber and bag filter:

***exhaust was stabilized and suction was restored, the factory environment was also improved.**

***Filter maintenance disappeared.**